

FIRST[®] LEGO[®] League

TUTRIALS

teach

share

learn

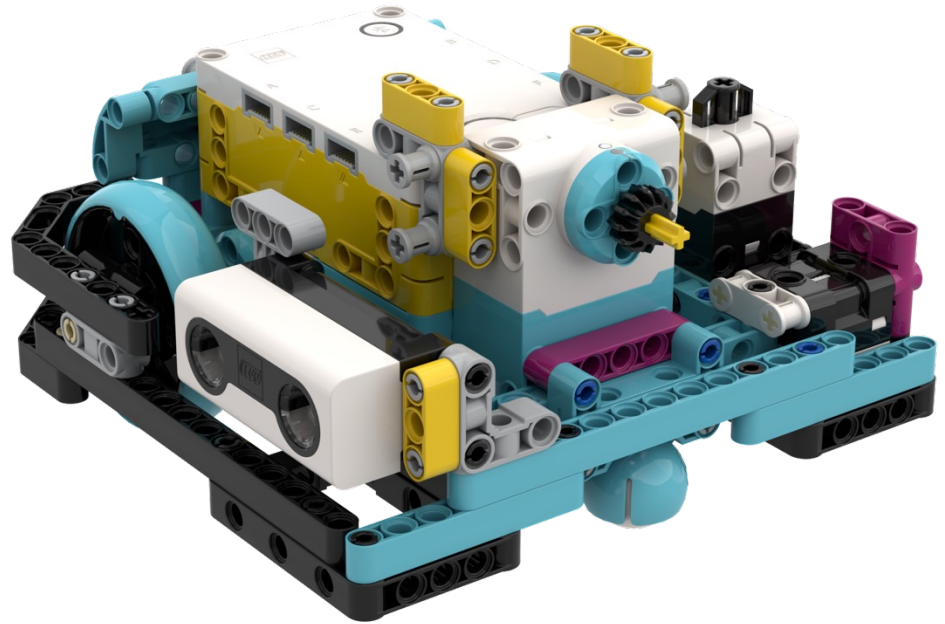
BRICKLINK STUDIO

SESHAN BROTHERS

WHY CREATE A CAD OF YOUR FLL ROBOT?

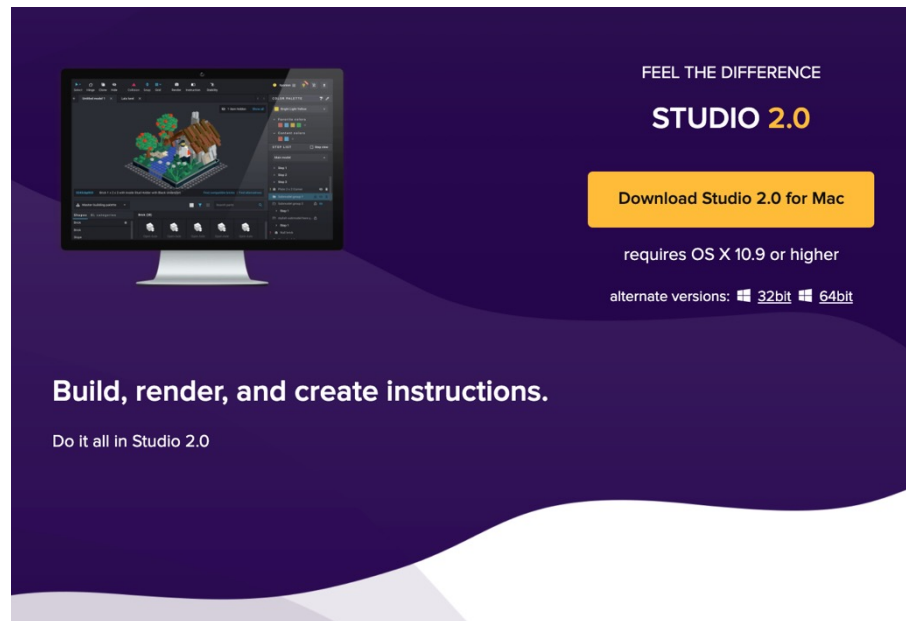
Droid Bot IV made in Studio 2.0

- Being able to design your robot ahead of time or being able to document your design can be useful
- You can now design a SPIKE Prime or Robot Inventor robot using Bricklink's Studio
- Studio lets you create high quality renders of your robot
- You can also use the same software to generate build instructions



STEP 1: DOWNLOAD AND INSTALL SOFTWARE

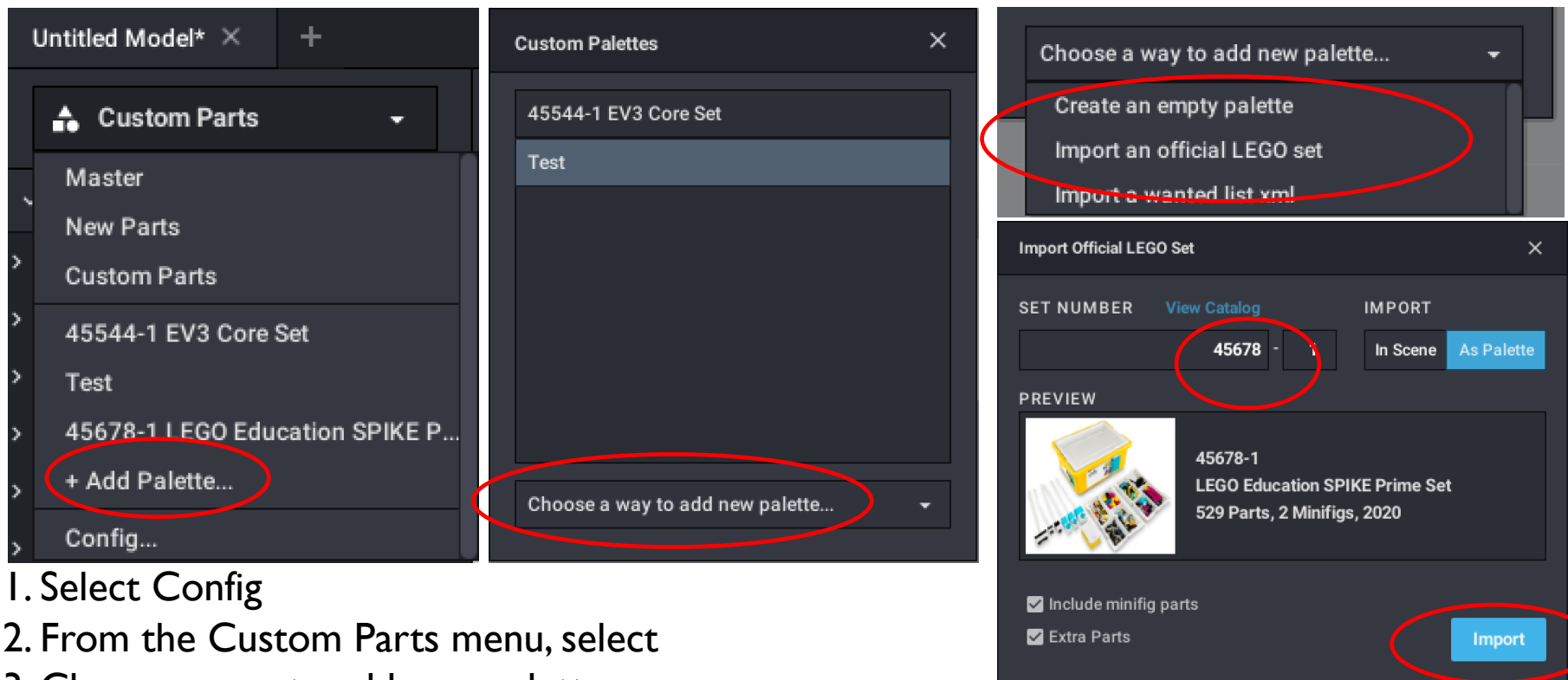
- <https://www.bricklink.com/v3/studio/download.page>



STEP 2: INSTALL A CUSTOM PARTS PACK

- Go to the following drives and download the entire CustomParts folder for either SPIKE Prime or MINDSTORMS 51515 (created by Philo Hurbain)
- It contains all the electronics and the new LEGO elements in the set in both sets
 - <https://drive.google.com/open?id=17YU4BkiRdbmpHFgSegkDYvc21wq5MSJi>. (SPIKE Prime)
 - <https://drive.google.com/file/d/1OLbxelCltmb16furagnSViyj1EAitajc/view> (MINDSTORMS 51515)
- Unzip the contents and place in C:\Users\{your username}\AppData\Local\Stud.io
- Spike Prime and/or 51515 parts will then be available in the Custom Parts palette of Studio.
- For Mac installs:
 - Go to your home directory click on Shift + Command + > to view hidden files
 - Go to local/share/stud.io and unzip the part files linked above in that folder

STEP 2: ALTERNATIVE METHOD (*HAS SOME BUGS)

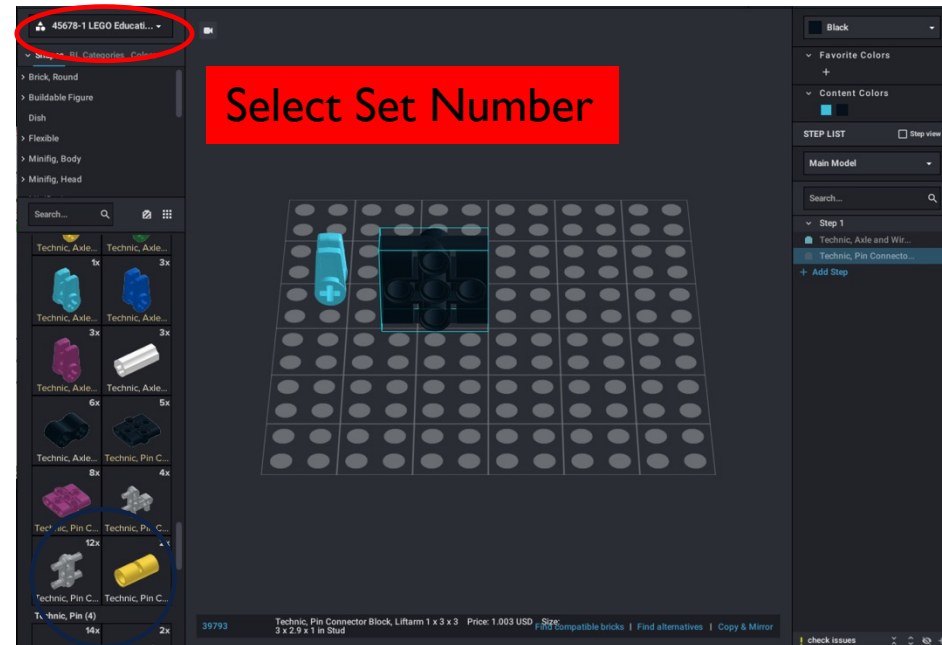
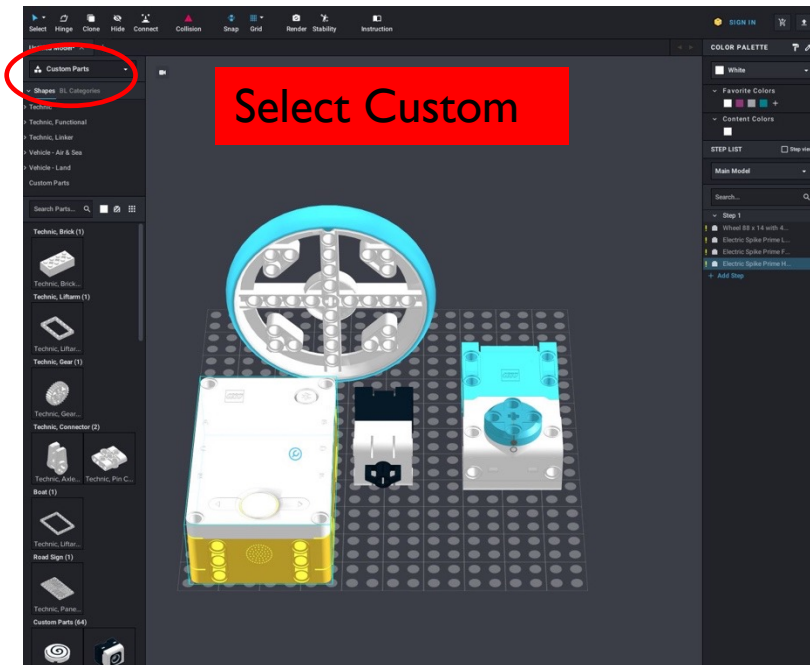


1. Select Config
2. From the Custom Parts menu, select
3. Choose a way to add new palette
4. Select import an official LEGO set
5. Type in the set number (45678 and 45680)
6. Import the elements

** Note: As of Dec 14, 2020 this method fails to import the SPIKE Prime electronics. Hopefully, Studio will fix this.*

STEP 3: USING THE NEW ELEMENTS

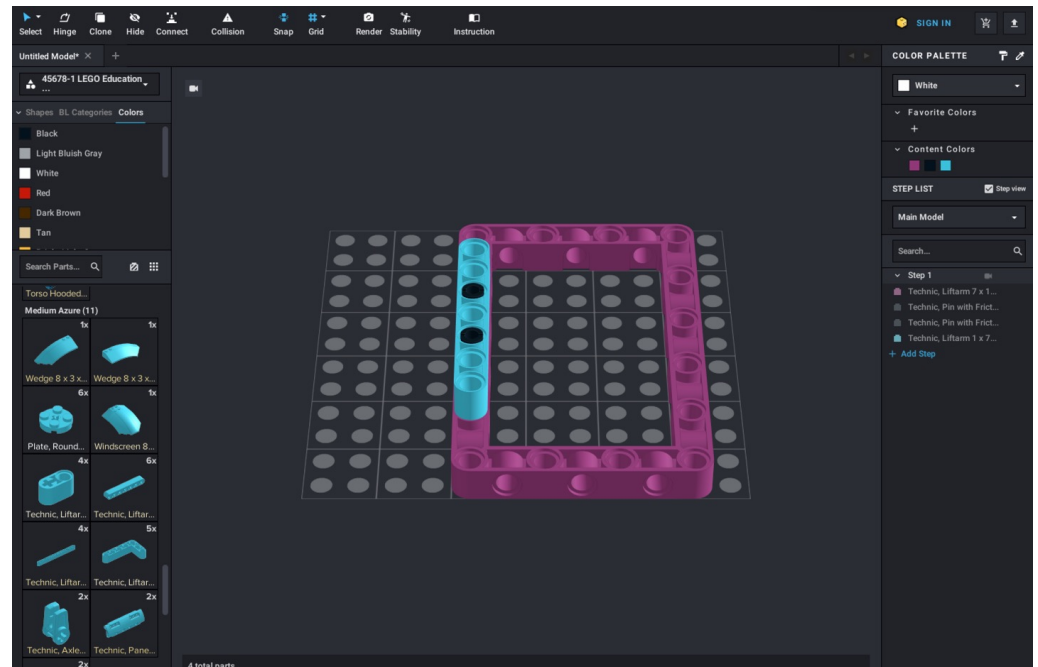
- Select parts from CUSTOM or using the SET NUMBER/NAME that you imported.
- The parts in that collection will appear below



You can now drag SPIKE Prime components into the canvas and build with them just like any other part.

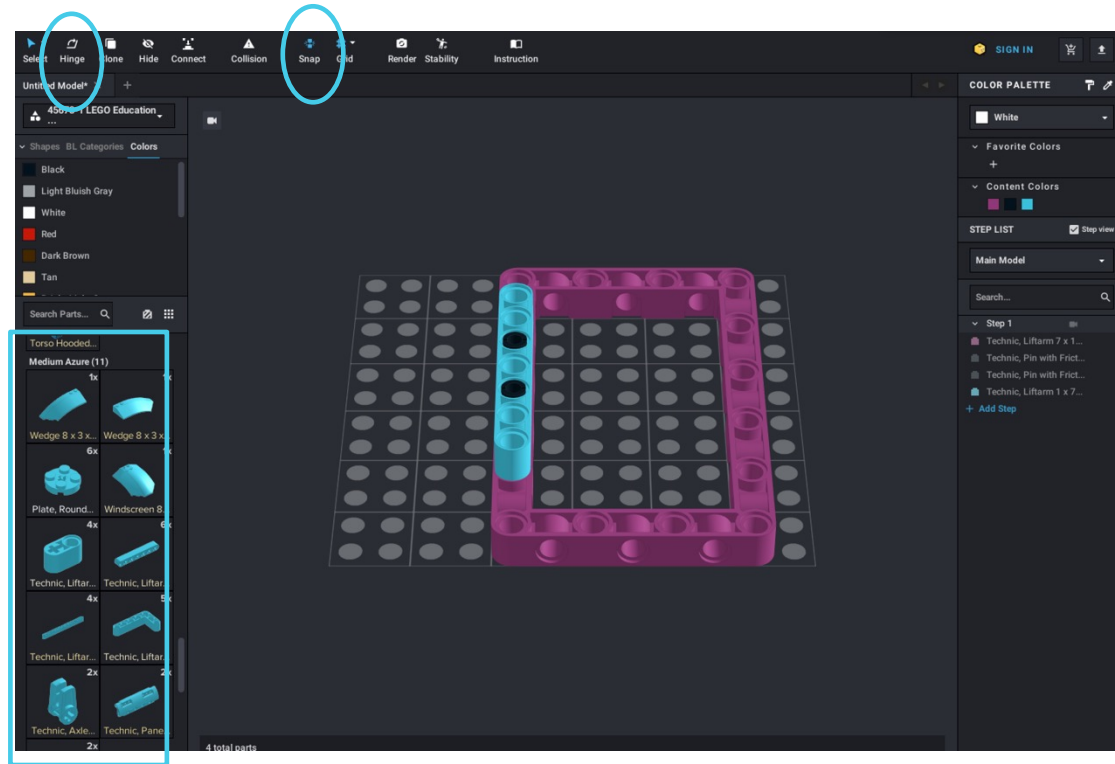
TIPS FOR USING STUDIO 2.0

- **Enable Snap** – more like LDD and easier for beginners
- **Import frequently used sets** (e.g. EV3 45444 and SPIKE Prime 45678) so you will have the basic parts without having to look up names and numbers
- **Change colors** using the color palette
- **Add steps as you go.** If you add parts in the order than makes sense, it is easier to split into steps to create build instructions



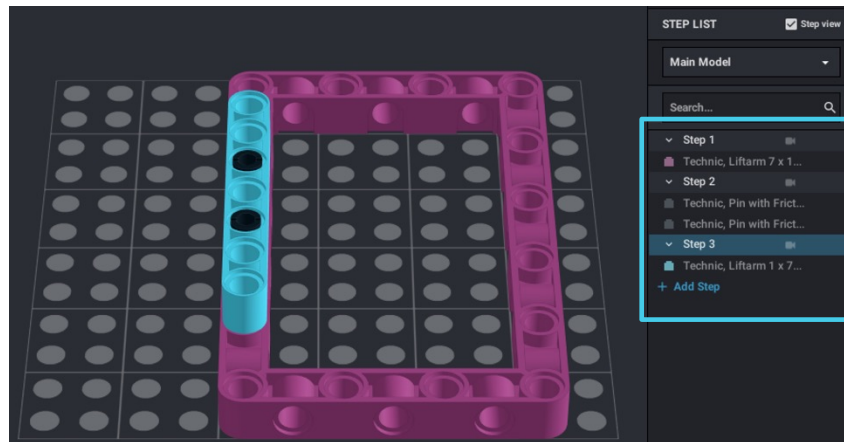
BASIC BUILDING TIPS

- Drag components from left column and on to the canvas.
- To rotate an item, click on an element (it will be highlighted), and then use the arrow keys to change its orientation
- If you need to change the angle of an element, use the **Hinge** tool
- When you want to connect two pieces together, if you have **Snap** tool enabled, the pieces will mesh correctly if you bring them close together



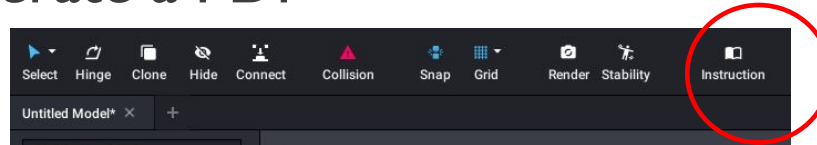
CREATING BASIC BUILD INSTRUCTIONS

- As you add elements, they get added to Step 1 on the right column
- Add new Steps and move elements as you need with your mouse
- If you select Step View, each time you click on a Step number, you will see just the new elements from that step

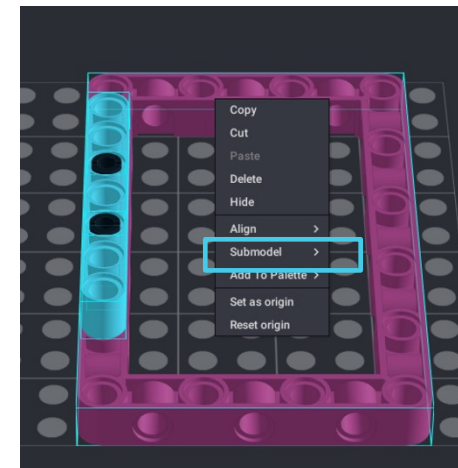


CREATING INSTRUCTIONS CONTINUED

- Once you have all the elements placed into Steps, you can click on Instructions from the top bar to format the actual steps and generate a PDF



- If you want to make smaller submodels inside the larger model, highlight all the parts you want in the submodel and right click to pick “submodel” You can now make steps for just this submodel.



CREDITS

- This tutorial was created by Sanjay Seshan and Arvind Seshan
- Check YouTube for more in depth Studio lessons
- More lessons at www.ev3lessons.com,
www.primelessons.org and www.flitutorials.com



This work is licensed under a [Creative Commons Attribution-NonCommercial-ShareAlike 4.0 International License](https://creativecommons.org/licenses/by-nc-sa/4.0/).